

DIAGNOSTIC PRE-ASSESSMENT B

*Use this Diagnostic Pre-Assessment to identify
students who require intervention in this area:*

Reading Informational Text

Standards Plus®
**COMMON CORE
INTERVENTION**

**Grade
8
B**

*After analyzing the
pre-assessment data, you can
implement your intervention
program with our ready-to-teach
Standards Plus Common Core
Intervention Materials.*



LANGUAGE ARTS GRADE 8

Diagnostic Pre-Assessment



Administering the Diagnostic Pre-Assessment:

- Determine if all or a subgroup of your students will be assessed.
- Print the appropriate number of student assessments.
- Distribute the assessments and review the directions with the students.
- Have students complete the assessment independently.
- Collect and score the assessments.
- Students who perform at 75% or lower will benefit from intervention instruction for the topic.

.....

See the next page for the Diagnostic Pre-Assessment procedure and answer key.

Procedure and Answer Key

Standards Plus® – Common Core Intervention Language Arts – Grade 8

Procedure: Each intervention assessment is designed to be completed independently by the students. Read the directions aloud, and ensure that students understand how to mark their answer choices. Collect the assessments and use the answer key to correct.

Strand: Reading Informational Text

Focus: Understanding Texts

Pre-Assessment: #B1

Answers:

Answers may vary; possible answers:

1. The central idea is to inform the reader about manatees.
2. *Propel* means to drive themselves forward in the passage.
3. If a manatee gets stuck in cold water, it can become distressed or even die.
4. Summary: Manatees are large marine mammals that live in oceans and rivers. They live their whole lives in water, but they breathe air. They can stay under water for 3-4 minutes or longer depending on their movement. There are three types of manatees that live along the east coast of North America, along the west coast of Africa, and in and around the Amazon River. They can't be in cold water, and they eat plants. They use their tail and flippers to move around and to help them eat.

Strand: Reading Informational Text

Focus: Analyzing Documents

Pre-Assessment: #B2

Answers:

Answers may vary; possible answers:

1. Anyone who is flying into or out of this airport with this airline, or anyone who is picking someone up.
2. All of the flights with destinations in the west are delayed.
3. The central idea of this text is information for arriving and departing flights for Atlantic-Pacific Airways at Logan International Airport.
4. To fly to New Orleans, I would go to Gate 3B before 10:35 am.
5. I would be at Logan International Airport in Boston if I were reading this schedule.
6. *Flight Departures* means flights that are leaving Logan International Airport to go other places.

.....

See the next two pages for the Diagnostic Pre-Assessments.

Name: _____

Pre-Assessment B1

Directions: Read the passage below. Answer the questions with complete sentences.

Manatees are marine mammals that live in oceans, freshwater rivers, and the areas where rivers meet the ocean. This means that they can live in both saltwater and freshwater. They are large; growing up to 13 feet long and weighing as much as 1300 pounds. Manatees are born in the water and never leave it, but like all mammals, they must breathe air from the surface of the water. They can stay under the water for up to 15 minutes, but if they are swimming around, they must surface every three or four minutes.

There are three types of manatee defined by where they live: the West Indian that lives along the East coast of North America from Florida to Brazil, the West African that lives along the west coast of Africa, and the Amazonian that lives in the Amazon River. The Amazonian Manatee lives exclusively in the Amazon and surrounding rivers, so it does not venture into saltwater. Manatees cannot survive in water that is below 60°F, and they cannot stay in water below 68°F for long without becoming distressed.

Manatees prefer shallow water that is rich in plant life. They eat 10-15% of their body weight in plants each day. They use their tails to propel them through the water and to dig up plants and roots from the bottom of the ocean and rivers. They use their flippers to steer in the water and to gather plants toward their mouths.

1. What is the central idea of this passage?

2. What does “propel” mean in the passage?

3. According to the passage, what would happen if a manatee got stuck in cold water?

4. Write an objective summary of the passage.

Name: _____

Pre-Assessment B2

Directions: Read the passage below, and answer the questions that follow.

Atlantic-Pacific Airways – Logan International Airport, Boston, MA					
Flight Arrivals			Flight Departures		
Time	Gate	Origination	Time	Gate	Destination
9:45 A	1A	Chicago	9:50 A	3A	Seattle (delayed)
10:15 A	2B	Miami	10:35 A	3B	New Orleans
10:40 A	4C	Atlanta	11:20 A	3C	Phoenix (delayed)
10:55 A	5A	Denver	11:45 A	5B	Los Angeles (delayed)
11:25 A	2C	Houston	12:10 P	1C	Las Vegas (delayed)
12:05 P	1B	Los Angeles	12:35 P	2B	Atlanta
12:55 P	3A	St. Louis	1:20 P	4A	Chicago

1. Who would use this schedule?

2. There is a large storm on the west coast. How does the schedule reflect the storm?

3. What is the central idea of this text?

4. If you were flying to New Orleans, what gate would you go to and at what time?

5. What airport are you in if you are reading this schedule?

6. What does “Flight Departures” mean on this schedule?

Standards Plus® Common Core Intervention

Diagnostic Pre-Assessment Results

Once you have the results of the Diagnostic Pre-Assessment, providing targeted intervention instruction is easy with Standards Plus Common Core Intervention. Simply teach the topic(s) that meet your students' needs. Each topic includes scaffolded, ready-to-teach, scripted, direct instruction lessons, performance tasks, and post-assessments.

.....

More About Standards Plus Common Core Intervention

What is Standards Plus CC Intervention?

Standards Plus CC Intervention is a set of research-based, scaffolded 1-8 language arts and math lessons written to the Common Core Standards. These explicit, direct instruction lessons were designed to build the essential prerequisite elements of the grade level standards.

Benefits:

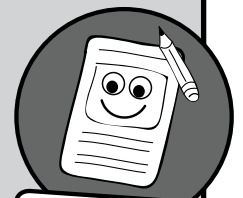
- Ready-to-teach lessons and performance tasks with very little teacher preparation.
- Instruction is scaffolded and provides exposure to the standards at DOK levels 1-3.
- Grade level content vocabulary is taught within the context of the lessons.
- Prepares students for grade level success.
- Ideal for:
 - Small group instruction
 - After school programs
 - Special Ed. settings to meet IEP goals
 - Summer school programs

Standards Plus Common Core Intervention Instructional Components

Step-by-Step

Direct Instruction Lessons:

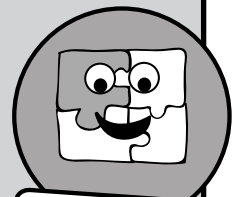
These ready-to-teach lessons are organized by topic to develop prerequisite skills and concepts while scaffolding to grade-level appropriate activities. These lessons are written to DOK levels 1 and 2.



Step-by-Step Lessons

Performance Tasks:

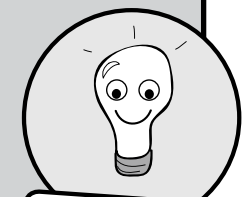
Within each topic, students have the opportunity to participate in a Performance Task to apply what they have learned in a unique setting and cement their learning. These lessons are written to DOK levels 1 and 2.



Performance Tasks

Post-Assessments:

Parallel to the Diagnostic Pre-Assessments, these assessments provide data directly related to the instruction provided.



**Post-Assessments
(Parallel to Diagnostic)**

Standards Plus® COMMON CORE INTERVENTION

Grade	ELA Topic A	ELA Topic B	ELA Topic C	ELA Topic D
1	Reading Literature and Writing	Reading Informational Text	Reading Foundational Skills, Capitalization, and Punctuation	Spelling, Grammar & Usage, and Vocabulary
2	Reading Literature and Writing	Reading Informational Text	Reading Foundational Skills, Capitalization, Punctuation, and Spelling	Grammar & Usage and Vocabulary
3	Reading Literature and Writing	Reading Informational Text	Capitalization, Punctuation, and Spelling	Grammar & Usage and Vocabulary
4	Reading Literature and Writing	Reading Informational Text	Capitalization, Punctuation, and Spelling	Grammar & Usage and Vocabulary
5	Reading Literature and Writing	Reading Informational Text	Capitalization, Punctuation, and Spelling	Grammar & Usage and Vocabulary
6	Reading Literature and Writing	Reading Informational Text	Capitalization, Punctuation, and Spelling	Grammar & Usage and Vocabulary
7	Reading Literature and Writing	Reading Informational Text	Capitalization, Punctuation, and Spelling	Grammar & Usage and Vocabulary
8	Reading Literature and Writing	Reading Informational Text	Capitalization, Punctuation, Spelling, and Grammar & Usage	Vocabulary
Grade	Math Topic A	Math Topic B	Math Topic C	Math Topic D
1	Operations & Algebraic Thinking	Number & Operations in Base Ten	Measurement & Data	Geometry
2	Operations & Algebraic Thinking	Number & Operations in Base Ten	Measurement & Data	Geometry
3	Operations & Algebraic Thinking	Number & Operations – Fractions	Number & Operations in Base Ten and Geometry	Measurement & Data
4	Operations & Algebraic Thinking	Number & Operations – Fractions	Number & Operations in Base Ten and Geometry	Measurement & Data
5	Number & Operations in Base Ten	Number & Operations – Fractions	Measurement & Data	Operations & Algebraic Thinking
6	The Number System	Ratios & Proportional Relationships	Expressions & Equations	Geometry and Statistics & Probability
7	Ratios & Proportional Relationships and The Number System	Expressions & Equations	Statistics & Probability	Geometry
8	The Number System and Expressions & Equations	Functions	Statistics & Probability	Geometry

To learn more, please contact 1.877.505.9152