

DIAGNOSTIC PRE-ASSESSMENT B

*Use this Diagnostic Pre-Assessment to identify
students who require intervention in this area:*

Number & Operations – Fractions

Standards Plus®
COMMON CORE
INTERVENTION

Grade

4

B

After analyzing the
pre-assessment data, you can
implement your intervention
program with our ready-to-teach
Standards Plus Common Core
Intervention Materials.

MATHEMATICS GRADE 4

Diagnostic Pre-Assessment



Administering the Diagnostic Pre-Assessment:

- Determine if all or a subgroup of your students will be assessed.
- Print the appropriate number of student assessments.
- Distribute the assessments and review the directions with the students.
- Have students complete the assessment independently.
- Collect and score the assessments.
- Students who perform at 75% or lower will benefit from intervention instruction for the topic.

.....

See the next page for the Diagnostic Pre-Assessment procedure and answer key.

Procedure and Answer Key

Standards Plus® – Common Core Intervention Mathematics – Grade 4

Procedure: Each intervention assessment is designed to be completed independently by the students. Read the directions aloud, and ensure that students understand how to mark their answer choices. Collect the assessments and use the answer key to correct.

Domain: Number and Operations – Fractions

Focus: Fractions

Pre-Assessment: #B1

Answers:

1. $1\frac{1}{2}$
2. $3\frac{3}{4}$
3. $\frac{3}{4}$
4. $\frac{8}{9}$
5. $> ; <$
6. $> ; =$

Domain: Number and Operations – Fractions

Focus: Operations with Fractions

Pre-Assessment: #B2

Answers:

1. $\frac{3}{5}$
2. $\frac{4}{7}$
3. $\frac{36}{5}$
4. $4\frac{2}{4}$ or $4\frac{1}{2}$
5. $2\frac{4}{8}$ or $2\frac{1}{2}$
6. $11\frac{4}{5}$
7. $\frac{6}{5}$ or $1\frac{1}{5}$
8. a) What fraction of the sandwich did Patricia eat?
b) Key words: ate, what fraction.
c) Operation: +.
d) $\frac{1}{8}$ sandwich; $\frac{5}{8}$ sandwich
e) $\frac{1}{8} + \frac{5}{8} = \frac{6}{8}$
f) Answer: Patricia ate $\frac{6}{8}$ of the sandwich.

Procedure and Answer Key
Standards Plus® – Common Core Intervention Mathematics – Grade 4

Procedure: Each intervention assessment is designed to be completed independently by the students. Read the directions aloud, and ensure that students understand how to mark their answer choices. Collect the assessments and use the answer key to correct.

<u>Domain:</u> Number and Operations – Fractions	<u>Focus:</u> Fractions and Decimals	Pre-Assessment: #B3
--	--------------------------------------	----------------------------

- Answers:**
- | | |
|----|--------------------|
| 1. | $\frac{26}{100}$ |
| 2. | 0.19 |
| 3. | 0.70 |
| 4. | $\frac{55}{100}$ |
| 5. | 4 hundredths; 0.04 |
| 6. | 9 tenths; 0.9 |
| 7. | 43.7 |
| 8. | 0.3; 0.7 |
| 9. | >; <; = |

.....

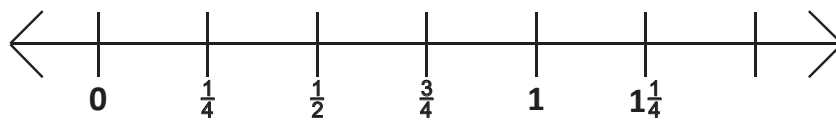
See the next three pages for the Diagnostic Pre-Assessments.

Name: _____

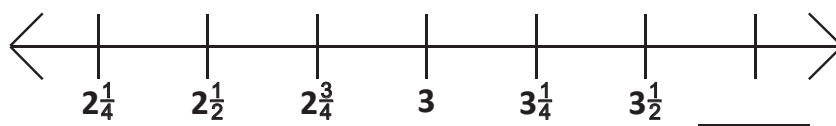
Pre-Assessment B1

Directions: For items 1 and 2, write the missing number.

1.

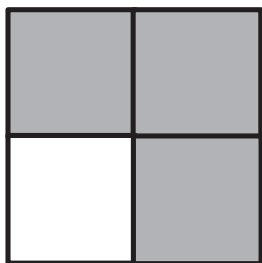


2.

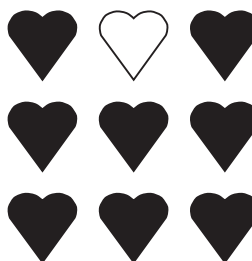


Directions: Write the fraction represented by the shaded portion.

3.



4.



Directions: Use the symbols $<$, $=$, $>$ to compare the fractions and mixed numbers.

5.

$$\frac{2}{3} \bigcirc \frac{1}{3}$$

$$\frac{5}{8} \bigcirc \frac{7}{8}$$

6.

$$2\frac{2}{7} \bigcirc 1\frac{6}{7}$$

$$3\frac{5}{5} \bigcirc 4$$

Name: _____

Pre-Assessment B2

Directions: Solve each problem.

1. $\frac{1}{5} + \frac{2}{5} =$

2. $\frac{6}{7} - \frac{2}{7} =$

3. Convert $7\frac{1}{5}$ to an improper fraction.

4. Convert $\frac{18}{4}$ to a mixed number.

5. $3\frac{5}{8} - 1\frac{1}{8} =$

6. $4\frac{3}{5} + 7\frac{1}{5} =$

7. $\frac{2}{5} \times 3 =$

8. Patricia ate $\frac{1}{8}$ of her sandwich as a snack. At lunch she ate $\frac{5}{8}$ of the sandwich. What fraction of the sandwich did Patricia eat?

a) Underline the question.

b) Identify key words. _____

c) Determine the required operation (+, -, ×, ÷). _____

d) Identify the relevant information.

e) Solve and check your answer.

f) Answer in sentence form: _____

Name: _____

Pre-Assessment B3

Directions: Determine the missing information.

	Fraction Equivalent	Decimal Equivalent
	$\frac{87}{100}$	0.87
1.		0.26
2.	$\frac{19}{100}$	
3.	$\frac{70}{100}$	
4.		0.55

Directions: Write your answers on the lines provided for you.

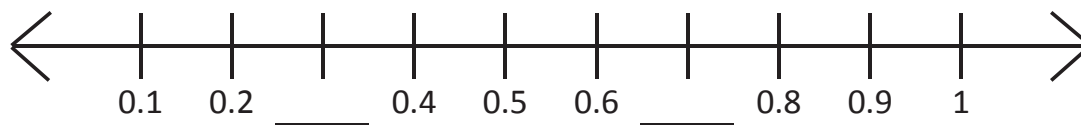
5. What is the place value of the underlined digit? 56.74

6. What is the place value of the underlined digit? 7,902.98

7. Write this number using standard notation:

Forty-three and seven tenths: _____

8. Fill in the blanks for the numbers missing on the number line.



9. Use the correct symbol to compare the following decimals:

0.9 ____ 0.8

1.23 ____ 1.32

1.60 ____ 1.60

Standards Plus® Common Core Intervention

Diagnostic Pre-Assessment Results

Once you have the results of the Diagnostic Pre-Assessment, providing targeted intervention instruction is easy with Standards Plus Common Core Intervention. Simply teach the topic(s) that meet your students' needs. Each topic includes scaffolded, ready-to-teach, scripted, direct instruction lessons, performance tasks, and post-assessments.

.....

More About Standards Plus Common Core Intervention

What is Standards Plus CC Intervention?

Standards Plus CC Intervention is a set of research-based, scaffolded 1-8 language arts and math lessons written to the Common Core Standards. These explicit, direct instruction lessons were designed to build the essential prerequisite elements of the grade level standards.

Benefits:

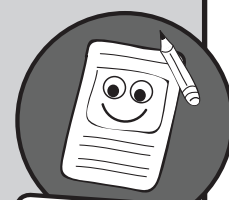
- Ready-to-teach lessons and performance tasks with very little teacher preparation.
- Instruction is scaffolded and provides exposure to the standards at DOK levels 1-3.
- Grade level content vocabulary is taught within the context of the lessons.
- Prepares students for grade level success.
- Ideal for:
 - Small group instruction
 - After school programs
 - Special Ed. settings to meet IEP goals
 - Summer school programs

Standards Plus Common Core Intervention Instructional Components

Step-by-Step

Direct Instruction Lessons:

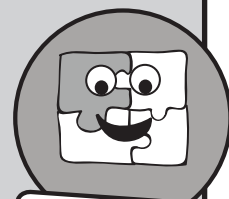
These ready-to-teach lessons are organized by topic to develop prerequisite skills and concepts while scaffolding to grade-level appropriate activities. These lessons are written to DOK levels 1 and 2.



**Step-by-Step
Lessons**

Performance Tasks:

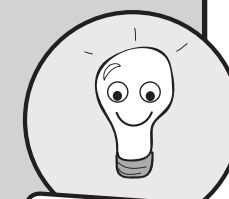
Within each topic, students have the opportunity to participate in a Performance Task to apply what they have learned in a unique setting and cement their learning. These lessons are written to DOK levels 1 and 2.



**Performance
Tasks**

Post-Assessments:

Parallel to the Diagnostic Pre-Assessments, these assessments provide data directly related to the instruction provided.



**Post-Assessments
(Parallel to Diagnostic)**

Standards Plus® COMMON CORE INTERVENTION

Grade	ELA Topic A	ELA Topic B	ELA Topic C	ELA Topic D
1	Reading Literature and Writing	Reading Informational Text	Reading Foundational Skills, Capitalization, and Punctuation	Spelling, Grammar & Usage, and Vocabulary
2	Reading Literature and Writing	Reading Informational Text	Reading Foundational Skills, Capitalization, Punctuation, and Spelling	Grammar & Usage and Vocabulary
3	Reading Literature and Writing	Reading Informational Text	Capitalization, Punctuation, and Spelling	Grammar & Usage and Vocabulary
4	Reading Literature and Writing	Reading Informational Text	Capitalization, Punctuation, and Spelling	Grammar & Usage and Vocabulary
5	Reading Literature and Writing	Reading Informational Text	Capitalization, Punctuation, and Spelling	Grammar & Usage and Vocabulary
6	Reading Literature and Writing	Reading Informational Text	Capitalization, Punctuation, and Spelling	Grammar & Usage and Vocabulary
7	Reading Literature and Writing	Reading Informational Text	Capitalization, Punctuation, and Spelling	Grammar & Usage and Vocabulary
8	Reading Literature and Writing	Reading Informational Text	Capitalization, Punctuation, Spelling, and Grammar & Usage	Vocabulary
Grade	Math Topic A	Math Topic B	Math Topic C	Math Topic D
1	Operations & Algebraic Thinking	Number & Operations in Base Ten	Measurement & Data	Geometry
2	Operations & Algebraic Thinking	Number & Operations in Base Ten	Measurement & Data	Geometry
3	Operations & Algebraic Thinking	Number & Operations – Fractions	Number & Operations in Base Ten and Geometry	Measurement & Data
4	Operations & Algebraic Thinking	Number & Operations – Fractions	Number & Operations in Base Ten and Geometry	Measurement & Data
5	Number & Operations in Base Ten	Number & Operations – Fractions	Measurement & Data	Operations & Algebraic Thinking
6	The Number System	Ratios & Proportional Relationships	Expressions & Equations	Geometry and Statistics & Probability
7	Ratios & Proportional Relationships and The Number System	Expressions & Equations	Statistics & Probability	Geometry
8	The Number System and Expressions & Equations	Functions	Statistics & Probability	Geometry

To learn more, please contact 1.877.505.9152