

DIAGNOSTIC PRE-ASSESSMENT B

*Use this Diagnostic Pre-Assessment to identify
students who require intervention in this area:*

Ratios & Proportional Relationships

Standards Plus®
COMMON CORE
INTERVENTION

Grade

6

B

After analyzing the
pre-assessment data, you can
implement your intervention
program with our ready-to-teach
Standards Plus Common Core
Intervention Materials.



MATHEMATICS GRADE 6

Diagnostic Pre-Assessment



Administering the Diagnostic Pre-Assessment:

- Determine if all or a subgroup of your students will be assessed.
- Print the appropriate number of student assessments.
- Distribute the assessments and review the directions with the students.
- Have students complete the assessment independently.
- Collect and score the assessments.
- Students who perform at 75% or lower will benefit from intervention instruction for the topic.

.....

See the next page for the Diagnostic Pre-Assessment procedure and answer key.

| |
|---|
| Procedure and Answer Key |
| Standards Plus® – Common Core Intervention Mathematics – Grade 6 |

Procedure: Each intervention assessment is designed to be completed independently by the students. Read the directions aloud, and ensure that students understand how to mark their answer choices. Collect the assessments and use the answer key to correct.

| | | |
|--|-----------------------------------|----------------------------|
| <u>Domain:</u> Ratios & Proportional Relationships | <u>Focus:</u> Rates & Proportions | Pre-Assessment: #B1 |
|--|-----------------------------------|----------------------------|

- Answers:**
1. 30 miles/gallon
 2. 840 minutes
 3. \$2500
 4. \$45.50
 5. $m = 4$
 6. 2 12-ounce bags are less expensive than the 24-ounce bag

| | | |
|--|--|----------------------------|
| <u>Domain:</u> Ratios & Proportional Relationships | <u>Focus:</u> Fractions, Decimals, Percent | Pre-Assessment: #B2 |
|--|--|----------------------------|

- Answers:**
1. \$4.50
 2. \$103.20
 3. 0.16
 4. 48%
 5. $\frac{91}{100}$
 6. $\frac{26}{100}$, 0.26
 - $\frac{54}{100}$, 54%
 - 0.07, 7%

.....

See the next two pages for the Diagnostic Pre-Assessments.

Name: _____

Pre-Assessment B1

Directions: Solve each problem. Write your answers on the lines.

1. Tim's car traveled 450 miles using 15 gallons of gas. How many miles did Tim get per gallon? Find the unit rate and write in lowest terms.

2. How many minutes are in 14 hours?

3. Johnny saves \$20 out of every \$100 he earns. How much will he need to earn to save the \$500 he needs for his vacation?

4. Alan did 7 hours of yard work and was paid \$6.50 an hour. How much money did he make?

5. Solve for m .

$$\frac{2}{15} = \frac{m}{30}$$

Directions: Solve the problem below. Write your answer on the line below.

6. You can buy Super Coffee in two different size bags. You can buy a 12-ounce bag for \$6.98, or you can buy a 24-ounce bag for \$14.07. Which is the better buy?

Name: _____

Pre-Assessment B2

Directions: Solve each problem. Write your answers on the lines.

1. Ashley took her friend Diane out to lunch. They were celebrating Diane's birthday. The bill totaled \$30.00. Ashley planned to tip their server 15%. How much of a tip will she leave?

2. Mike bought 2 shirts for \$25.00, each, a pair of jeans for \$60.00, and a pair of shoes for \$19.00. He has a coupon for 20% off his purchase. What is the total price of his purchase with the discount?

3. What is the decimal equivalent of $\frac{16}{100}$?

4. What percent is represented by 0.48?

5. What is the fraction equivalent of 0.91?

6. Complete the table.

| Fraction equivalent | Decimal equivalent | Percent |
|---------------------|--------------------|---------|
| | | 26% |
| | 0.54 | |
| $\frac{7}{100}$ | | |

Standards Plus® Common Core Intervention

Diagnostic Pre-Assessment Results

Once you have the results of the Diagnostic Pre-Assessment, providing targeted intervention instruction is easy with Standards Plus Common Core Intervention. Simply teach the topic(s) that meet your students' needs. Each topic includes scaffolded, ready-to-teach, scripted, direct instruction lessons, performance tasks, and post-assessments.

.....

More About Standards Plus Common Core Intervention

What is Standards Plus CC Intervention?

Standards Plus CC Intervention is a set of research-based, scaffolded 1-8 language arts and math lessons written to the Common Core Standards. These explicit, direct instruction lessons were designed to build the essential prerequisite elements of the grade level standards.

Benefits:

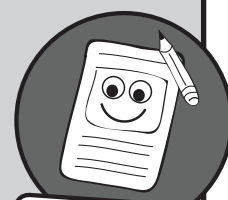
- Ready-to-teach lessons and performance tasks with very little teacher preparation.
- Instruction is scaffolded and provides exposure to the standards at DOK levels 1-3.
- Grade level content vocabulary is taught within the context of the lessons.
- Prepares students for grade level success.
- Ideal for:
 - Small group instruction
 - After school programs
 - Special Ed. settings to meet IEP goals
 - Summer school programs

Standards Plus Common Core Intervention Instructional Components

Step-by-Step

Direct Instruction Lessons:

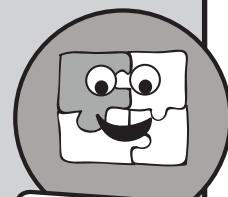
These ready-to-teach lessons are organized by topic to develop prerequisite skills and concepts while scaffolding to grade-level appropriate activities. These lessons are written to DOK levels 1 and 2.



**Step-by-Step
Lessons**

Performance Tasks:

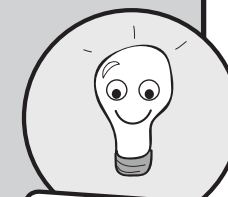
Within each topic, students have the opportunity to participate in a Performance Task to apply what they have learned in a unique setting and cement their learning. These lessons are written to DOK levels 1 and 2.



**Performance
Tasks**

Post-Assessments:

Parallel to the Diagnostic Pre-Assessments, these assessments provide data directly related to the instruction provided.



**Post-Assessments
(Parallel to Diagnostic)**

Standards Plus® COMMON CORE INTERVENTION

| Grade | ELA Topic A | ELA Topic B | ELA Topic C | ELA Topic D |
|----------|---|-------------------------------------|--|---|
| 1 | Reading Literature and Writing | Reading Informational Text | Reading Foundational Skills, Capitalization, and Punctuation | Spelling, Grammar & Usage, and Vocabulary |
| 2 | Reading Literature and Writing | Reading Informational Text | Reading Foundational Skills, Capitalization, Punctuation, and Spelling | Grammar & Usage and Vocabulary |
| 3 | Reading Literature and Writing | Reading Informational Text | Capitalization, Punctuation, and Spelling | Grammar & Usage and Vocabulary |
| 4 | Reading Literature and Writing | Reading Informational Text | Capitalization, Punctuation, and Spelling | Grammar & Usage and Vocabulary |
| 5 | Reading Literature and Writing | Reading Informational Text | Capitalization, Punctuation, and Spelling | Grammar & Usage and Vocabulary |
| 6 | Reading Literature and Writing | Reading Informational Text | Capitalization, Punctuation, and Spelling | Grammar & Usage and Vocabulary |
| 7 | Reading Literature and Writing | Reading Informational Text | Capitalization, Punctuation, and Spelling | Grammar & Usage and Vocabulary |
| 8 | Reading Literature and Writing | Reading Informational Text | Capitalization, Punctuation, Spelling, and Grammar & Usage | Vocabulary |
| Grade | Math Topic A | Math Topic B | Math Topic C | Math Topic D |
| 1 | Operations & Algebraic Thinking | Number & Operations in Base Ten | Measurement & Data | Geometry |
| 2 | Operations & Algebraic Thinking | Number & Operations in Base Ten | Measurement & Data | Geometry |
| 3 | Operations & Algebraic Thinking | Number & Operations – Fractions | Number & Operations in Base Ten and Geometry | Measurement & Data |
| 4 | Operations & Algebraic Thinking | Number & Operations – Fractions | Number & Operations in Base Ten and Geometry | Measurement & Data |
| 5 | Number & Operations in Base Ten | Number & Operations – Fractions | Measurement & Data | Operations & Algebraic Thinking |
| 6 | The Number System | Ratios & Proportional Relationships | Expressions & Equations | Geometry and Statistics & Probability |
| 7 | Ratios & Proportional Relationships and The Number System | Expressions & Equations | Statistics & Probability | Geometry |
| 8 | The Number System and Expressions & Equations | Functions | Statistics & Probability | Geometry |

To learn more, please contact 1.877.505.9152