

DIAGNOSTIC PRE-ASSESSMENT C

*Use this Diagnostic Pre-Assessment to identify
students who require intervention in this area:*

Statistics & Probability

Standards Plus®
COMMON CORE
INTERVENTION

Grade

7

C

After analyzing the
pre-assessment data, you can
implement your intervention
program with our ready-to-teach
Standards Plus Common Core
Intervention Materials.

MATHEMATICS GRADE 7

Diagnostic Pre-Assessment



Administering the Diagnostic Pre-Assessment:

- Determine if all or a subgroup of your students will be assessed.
- Print the appropriate number of student assessments.
- Distribute the assessments and review the directions with the students.
- Have students complete the assessment independently.
- Collect and score the assessments.
- Students who perform at 75% or lower will benefit from intervention instruction for the topic.

.....

See the next page for the Diagnostic Pre-Assessment procedure and answer key.

Procedure and Answer Key

Standards Plus® – Common Core Intervention Mathematics – Grade 7

Procedure: Each intervention assessment is designed to be completed independently by the students. Read the directions aloud, and ensure that students understand how to mark their answer choices. Collect the assessments and use the answer key to correct.

Domain: Statistics & Probability

Focus: Data Displays

Pre-Assessment: #C1

Answers:

1. 23, 25, 36, 38, 39, 42, 44, 44
2. Order the numbers from least to greatest. Arrange the tens in the stem column and the ones in the leaf column.
3. Minimum: 4; Maximum: 14; Median: 7.5
4. Q_1 : 2.75; Q_2 : 3.0; Q_3 : 3.5
5. Minimum: 98; Maximum: 115; Median: 100; Q_1 : 99; Q_3 : 107

Name: _____

Pre-Assessment C1

Directions: Read the questions below. Write your answers on the lines below.

1. Which data set is displayed in this stem-and-leaf plot?

Stem	Leaf
2	3 5
3	6 8 9
4	2 4 4

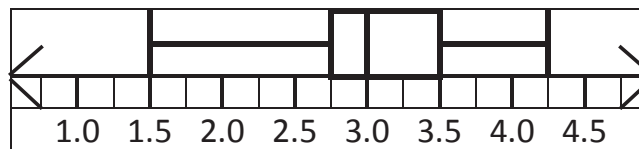
2. What are the steps used to create a stem and leaf plot?

3. What are the minimum, maximum, and median values for the following data set?

Average Rainfall Winter / Spring in Dillington in the 1990's					
January	February	March	April	May	June
8"	7"	10"	14"	7"	4"

Minimum: _____ Maximum: _____ Median: _____

4. From the box-and-whiskers plot, determine the first, second, and third quartiles of the following data set.



Q₁: _____ Q₂: _____ Q₃: _____

5. Find the minimum, maximum, median, first quartile, and third quartile for this data set.

115, 106, 99, 107, 100, 98, 110, 98, 99, 103, 99

Minimum _____ Maximum _____ Median _____

First Quartile _____

Third Quartile _____

Name: _____

Pre-Assessment C2

Directions: Read the questions below. Write your answers on the lines below.

1. One out of every four people like blue cheese dressing on their salad. If Ruby's Café sells 48 salads for lunch, how many would have blue cheese dressing?

2. James was conducting a survey to see if students at his high school preferred water or soda with their meals. He chose the first 30 in line for lunch to survey.

This is an example of _____ sampling.

3. Tuesday's lunch at Ranchero Middle School included the following choices. How many different combinations of food are available? Create a tree diagram to show the possible combinations. Possible combinations: _____

Main Course	Vegetable	Drink
Burrito	Carrots	Milk
Lasagna	Peas	Iced Tea
Chicken Wrap	Broccoli	

Directions: Determine if the claim is valid or invalid, and why. If it is invalid, rewrite the question to make the claim valid.

4. 200 parents were asked the following question: "Should the number of students per classroom be increased so that more money can be spent on supporting the athletic teams?" The results showed that 71% of the parents were in favor of increasing class size.

Standards Plus® Common Core Intervention

Diagnostic Pre-Assessment Results

Once you have the results of the Diagnostic Pre-Assessment, providing targeted intervention instruction is easy with Standards Plus Common Core Intervention. Simply teach the topic(s) that meet your students' needs. Each topic includes scaffolded, ready-to-teach, scripted, direct instruction lessons, performance tasks, and post-assessments.

.....

More About Standards Plus Common Core Intervention

What is Standards Plus CC Intervention?

Standards Plus CC Intervention is a set of research-based, scaffolded 1-8 language arts and math lessons written to the Common Core Standards. These explicit, direct instruction lessons were designed to build the essential prerequisite elements of the grade level standards.

Benefits:

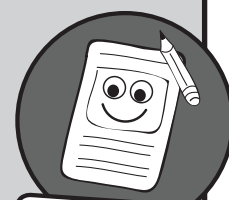
- Ready-to-teach lessons and performance tasks with very little teacher preparation.
- Instruction is scaffolded and provides exposure to the standards at DOK levels 1-3.
- Grade level content vocabulary is taught within the context of the lessons.
- Prepares students for grade level success.
- Ideal for:
 - Small group instruction
 - After school programs
 - Special Ed. settings to meet IEP goals
 - Summer school programs

Standards Plus Common Core Intervention Instructional Components

Step-by-Step

Direct Instruction Lessons:

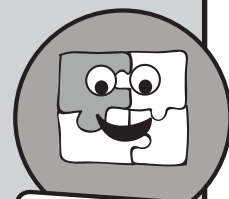
These ready-to-teach lessons are organized by topic to develop prerequisite skills and concepts while scaffolding to grade-level appropriate activities. These lessons are written to DOK levels 1 and 2.



**Step-by-Step
Lessons**

Performance Tasks:

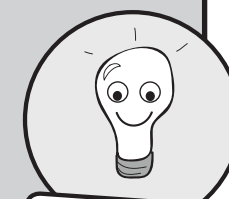
Within each topic, students have the opportunity to participate in a Performance Task to apply what they have learned in a unique setting and cement their learning. These lessons are written to DOK levels 1 and 2.



**Performance
Tasks**

Post-Assessments:

Parallel to the Diagnostic Pre-Assessments, these assessments provide data directly related to the instruction provided.



**Post-Assessments
(Parallel to Diagnostic)**

Standards Plus®

COMMON CORE INTERVENTION

Grade	ELA Topic A	ELA Topic B	ELA Topic C	ELA Topic D
1	Reading Literature and Writing	Reading Informational Text	Reading Foundational Skills, Capitalization, and Punctuation	Spelling, Grammar & Usage, and Vocabulary
2	Reading Literature and Writing	Reading Informational Text	Reading Foundational Skills, Capitalization, Punctuation, and Spelling	Grammar & Usage and Vocabulary
3	Reading Literature and Writing	Reading Informational Text	Capitalization, Punctuation, and Spelling	Grammar & Usage and Vocabulary
4	Reading Literature and Writing	Reading Informational Text	Capitalization, Punctuation, and Spelling	Grammar & Usage and Vocabulary
5	Reading Literature and Writing	Reading Informational Text	Capitalization, Punctuation, and Spelling	Grammar & Usage and Vocabulary
6	Reading Literature and Writing	Reading Informational Text	Capitalization, Punctuation, and Spelling	Grammar & Usage and Vocabulary
7	Reading Literature and Writing	Reading Informational Text	Capitalization, Punctuation, and Spelling	Grammar & Usage and Vocabulary
8	Reading Literature and Writing	Reading Informational Text	Capitalization, Punctuation, Spelling, and Grammar & Usage	Vocabulary
Grade	Math Topic A	Math Topic B	Math Topic C	Math Topic D
1	Operations & Algebraic Thinking	Number & Operations in Base Ten	Measurement & Data	Geometry
2	Operations & Algebraic Thinking	Number & Operations in Base Ten	Measurement & Data	Geometry
3	Operations & Algebraic Thinking	Number & Operations – Fractions	Number & Operations in Base Ten and Geometry	Measurement & Data
4	Operations & Algebraic Thinking	Number & Operations – Fractions	Number & Operations in Base Ten and Geometry	Measurement & Data
5	Number & Operations in Base Ten	Number & Operations – Fractions	Measurement & Data	Operations & Algebraic Thinking
6	The Number System	Ratios & Proportional Relationships	Expressions & Equations	Geometry and Statistics & Probability
7	Ratios & Proportional Relationships and The Number System	Expressions & Equations	Statistics & Probability	Geometry
8	The Number System and Expressions & Equations	Functions	Statistics & Probability	Geometry

To learn more, please contact 1.877.505.9152