

# DIAGNOSTIC PRE-ASSESSMENT A

*Use this Diagnostic Pre-Assessment to identify  
students who require intervention in these areas:  
The Number System • Expression & Equations*

Standards Plus®  
COMMON CORE  
**INTERVENTION**

**Grade**  
**8**  
**A**

*After analyzing the  
pre-assessment data, you can  
implement your intervention  
program with our ready-to-teach  
Standards Plus Common Core  
Intervention Materials.*



**MATHEMATICS GRADE 8**

## ***Diagnostic Pre-Assessment***



### **Administering the Diagnostic Pre-Assessment:**

- Determine if all or a subgroup of your students will be assessed.
- Print the appropriate number of student assessments.
- Distribute the assessments and review the directions with the students.
- Have students complete the assessment independently.
- Collect and score the assessments.
- Students who perform at 75% or lower will benefit from intervention instruction for the topic.

.....

**See the next page for the Diagnostic Pre-Assessment procedure and answer key.**

## Procedure and Answer Key

### Standards Plus® – Common Core Intervention Mathematics – Grade 8

**Procedure:** Each intervention assessment is designed to be completed independently by the students. Read the directions aloud, and ensure that students understand how to mark their answer choices. Collect the assessments and use the answer key to correct.

Domain: The Number System

Focus: Conversion & Comparison

**Pre-Assessment: #A1**

**Answers:**

1. >
2. >
3.  $\frac{3}{10}, \frac{3}{100}, \frac{75}{1000}$
4.  $\frac{1}{8}, \frac{1}{4}, .26, .3$
5. .43
6.  $.7\overline{3}$
7.  $\frac{9}{20}$
8.  $\frac{49}{50}$

Domain: Expressions & Equations

Focus: Rational Numbers

**Pre-Assessment: #A2**

**Answers:**

1.  $7^{12}$
2.  $y^{10}$
3. 11
4. 8
5. 6
6. 7
7.  $\frac{4}{10}$
8. 31.7

## Procedure and Answer Key

### Standards Plus® – Common Core Intervention Mathematics – Grade 8

**Procedure:** Each intervention assessment is designed to be completed independently by the students. Read the directions aloud, and ensure that students understand how to mark their answer choices. Collect the assessments and use the answer key to correct.

Domain: Expressions & Equations

Focus: Expressions & Equations

**Pre-Assessment: #A3**

**Answers:**

1. 40
2.  $2(d) \cdot 2(5)$
3.  $\frac{5 \cdot 6}{9 - 4} = 30 \div 5 = 6$
4.  $t = 209$
5.  $h = 7$
6.  $K = 6$

Domain: Expressions & Equations

Focus: Solve & Graph Equations

**Pre-Assessment: #A4**

**Answers:**

1.  $m = 126$
2.  $w = 48$
3. Horizontal
4.  $\frac{7}{6}$
5.  $-\frac{2}{5}$
6. C
7. A

.....

**See the next four pages for the Diagnostic Pre-Assessments.**

Name: \_\_\_\_\_

### Pre-Assessment A1

**Directions:** Solve each problem. Write your answers on the lines.

1. Write the sign (<, =, >) that makes the number sentence true.

$$.081 \text{ \_\_\_\_ } .08$$

2. Write the sign (<, =, >) that makes the number sentence true.

$$\frac{7}{8} \text{ \_\_\_\_ } \frac{3}{5}$$

3. Convert these decimals to fractions.

.3

.03

.075

4. Put in order from **least** to **greatest**:

$$\frac{1}{4}, \frac{1}{8}, .3, .26 \quad \text{\_\_\_\_, \_\_\_\_, \_\_\_\_, \_\_\_\_}$$

**Directions:** Convert the fractions to decimals and the decimals to fractions.

5.  $\frac{3}{7} = \text{\_\_\_\_\_\_}$

7.  $0.45 = \text{\_\_\_\_\_\_}$

6.  $\frac{11}{15} = \text{\_\_\_\_\_\_}$

8.  $0.98 = \text{\_\_\_\_\_\_}$

Name: \_\_\_\_\_

**Pre-Assessment A2**

**Directions:** Solve each problem. Write your answers on the lines.

1. Simplify.  $7^4 \cdot 7^8 =$  \_\_\_\_\_

2. Simplify.  $\frac{y^{12}}{y^2} =$  \_\_\_\_\_

3.  $\sqrt{121} =$  \_\_\_\_\_

4.  $\sqrt{64} =$  \_\_\_\_\_

**Directions:** Determine the absolute value of each of the integers below. Write your answers on the lines.

5.  $|-6| =$  \_\_\_\_\_

6.  $|7| =$  \_\_\_\_\_

7.  $|\frac{-4}{10}| =$  \_\_\_\_\_

8.  $|-31.7| =$  \_\_\_\_\_

Name: \_\_\_\_\_

### Pre-Assessment A3

**Directions:** Solve each problem. Write your answers on the lines.

1. Evaluate for  $a = 5$  and  $b = 6$ .

$$2a + 36 - b$$

2. Simplify using the distributive property.

$$2 \cdot (d + 5)$$

3. Evaluate the following expression. Make sure to show your work.

$$\frac{5(10 - 4)}{3^2 - (5 - 1)}$$

4. Solve for  $t$ .       $25 + t = 234$        $t = \underline{\hspace{2cm}}$

5. Solve for  $h$ .       $63 = 9 \cdot h$        $h = \underline{\hspace{2cm}}$

6. Solve for  $K$ .       $357 = 60K - 3$        $K = \underline{\hspace{2cm}}$

Name: \_\_\_\_\_

### Pre-Assessment A4

**Directions:** Solve each problem. Write your answers on the lines.

1. Solve for  $m$ .  $2m + 63 = 315$   $m =$  \_\_\_\_\_

2. Solve for  $w$ .  $\frac{w}{6} = 8$   $w =$  \_\_\_\_\_

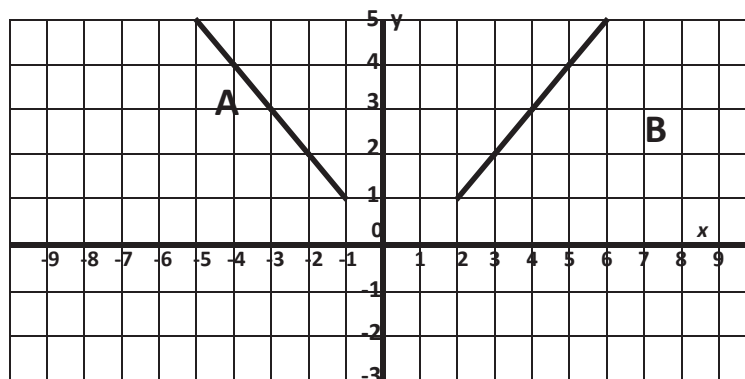
3. What type of line has a slope of zero? \_\_\_\_\_

**Directions:** Use the slope formula to determine the slope of lines that contain the given points.

4. (8, 4) and (2, -3) Slope: \_\_\_\_\_

$$m = \frac{y_1 - y_2}{x_1 - x_2}$$

5. (1, 5) and (6, 3) Slope: \_\_\_\_\_



**Directions:** Determine the equation that defines the lines on the coordinate grid.

6. Which equation defines line A on the coordinate grid?

A.  $x = y - 1$

B.  $x = 1 - y$

C.  $x = -y$

7. Which equation defines line B on the coordinate grid?

A.  $x = y + 1$

B.  $x = y - 1$

C.  $x = y$



## Standards Plus® Common Core Intervention

### ***Diagnostic Pre-Assessment Results***

Once you have the results of the Diagnostic Pre-Assessment, providing targeted intervention instruction is easy with Standards Plus Common Core Intervention. Simply teach the topic(s) that meet your students' needs. Each topic includes scaffolded, ready-to-teach, scripted, direct instruction lessons, performance tasks, and post-assessments.

.....

## More About Standards Plus Common Core Intervention

### **What is Standards Plus CC Intervention?**

Standards Plus CC Intervention is a set of research-based, scaffolded 1-8 language arts and math lessons written to the Common Core Standards. These explicit, direct instruction lessons were designed to build the essential prerequisite elements of the grade level standards.

### **Benefits:**

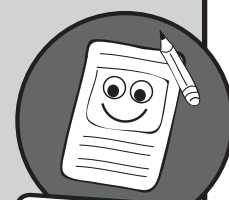
- Ready-to-teach lessons and performance tasks with very little teacher preparation.
- Instruction is scaffolded and provides exposure to the standards at DOK levels 1-3.
- Grade level content vocabulary is taught within the context of the lessons.
- Prepares students for grade level success.
- Ideal for:
  - Small group instruction
  - After school programs
  - Special Ed. settings to meet IEP goals
  - Summer school programs

### **Standards Plus Common Core Intervention Instructional Components**

#### **Step-by-Step**

#### **Direct Instruction Lessons:**

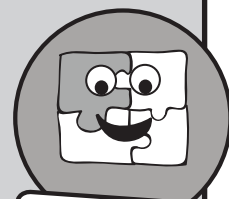
These ready-to-teach lessons are organized by topic to develop prerequisite skills and concepts while scaffolding to grade-level appropriate activities. These lessons are written to DOK levels 1 and 2.



**Step-by-Step  
Lessons**

#### **Performance Tasks:**

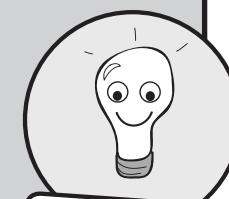
Within each topic, students have the opportunity to participate in a Performance Task to apply what they have learned in a unique setting and cement their learning. These lessons are written to DOK levels 1 and 2.



**Performance  
Tasks**

#### **Post-Assessments:**

Parallel to the Diagnostic Pre-Assessments, these assessments provide data directly related to the instruction provided.



**Post-Assessments  
(Parallel to Diagnostic)**

# Standards Plus<sup>®</sup>

## COMMON CORE INTERVENTION

Grade	ELA Topic A	ELA Topic B	ELA Topic C	ELA Topic D
<b>1</b>	Reading Literature and Writing	Reading Informational Text	Reading Foundational Skills, Capitalization, and Punctuation	Spelling, Grammar & Usage, and Vocabulary
<b>2</b>	Reading Literature and Writing	Reading Informational Text	Reading Foundational Skills, Capitalization, Punctuation, and Spelling	Grammar & Usage and Vocabulary
<b>3</b>	Reading Literature and Writing	Reading Informational Text	Capitalization, Punctuation, and Spelling	Grammar & Usage and Vocabulary
<b>4</b>	Reading Literature and Writing	Reading Informational Text	Capitalization, Punctuation, and Spelling	Grammar & Usage and Vocabulary
<b>5</b>	Reading Literature and Writing	Reading Informational Text	Capitalization, Punctuation, and Spelling	Grammar & Usage and Vocabulary
<b>6</b>	Reading Literature and Writing	Reading Informational Text	Capitalization, Punctuation, and Spelling	Grammar & Usage and Vocabulary
<b>7</b>	Reading Literature and Writing	Reading Informational Text	Capitalization, Punctuation, and Spelling	Grammar & Usage and Vocabulary
<b>8</b>	Reading Literature and Writing	Reading Informational Text	Capitalization, Punctuation, Spelling, and Grammar & Usage	Vocabulary
Grade	Math Topic A	Math Topic B	Math Topic C	Math Topic D
<b>1</b>	Operations & Algebraic Thinking	Number & Operations in Base Ten	Measurement & Data	Geometry
<b>2</b>	Operations & Algebraic Thinking	Number & Operations in Base Ten	Measurement & Data	Geometry
<b>3</b>	Operations & Algebraic Thinking	Number & Operations – Fractions	Number & Operations in Base Ten and Geometry	Measurement & Data
<b>4</b>	Operations & Algebraic Thinking	Number & Operations – Fractions	Number & Operations in Base Ten and Geometry	Measurement & Data
<b>5</b>	Number & Operations in Base Ten	Number & Operations – Fractions	Measurement & Data	Operations & Algebraic Thinking
<b>6</b>	The Number System	Ratios & Proportional Relationships	Expressions & Equations	Geometry and Statistics & Probability
<b>7</b>	Ratios & Proportional Relationships and The Number System	Expressions & Equations	Statistics & Probability	Geometry
<b>8</b>	The Number System and Expressions & Equations	Functions	Statistics & Probability	Geometry

**To learn more, please contact 1.877.505.9152**