

# Standards Plus® - 8<sup>th</sup> Grade Math

## *LOST LEARNING RECOVERY / INTERVENTION PACING GUIDE*

This Pacing Guide shows the direct alignment between *Standards Plus lessons* and *Standards Plus Intervention lessons*.

Combine your *Standards Plus lessons* and your *Standards Plus Intervention lessons* to recover lost learning or provide intervention.

### **POSSIBLE IMPLEMENTATION OPTIONS**

#### **Teach Intervention lessons:**

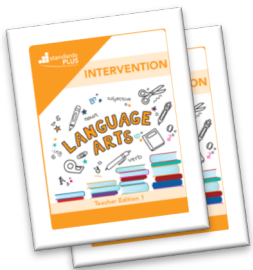
**OPTION 1:** Prior to teaching grade level lessons, to prepare students for grade level content.

**OPTION 2:** After teaching grade level content to fill in the gaps for students who need additional instruction to master the standard.

*The Intervention lessons are in your digital platform and are projectable or printable.*

**OR**

*Printed Intervention Teacher and Student Editions are also available for purchase. Contact us at 1-877-505-9152 or [office@standardsplus.org](mailto:office@standardsplus.org) for more information.*



**8<sup>th</sup> GRADE LANGUAGE ARTS -  
GRADE LEVEL SKILLS**  
Standards Plus<sup>®</sup> Year Long Materials  
The Number System



**SUPPORTING SKILLS THAT  
BUILD TO GRADE LEVEL**  
**Standards Plus<sup>®</sup> Intervention**  
The Number System

Lesson	Focus	Standard(s)
1	Types of Numbers	8.NS.1
2	Decimal Expansion	
3	Converting Repeating Decimals to Fractions	
4	Converting Repeating Decimals to Fractions	
A1	Assessment – Irrational Numbers	
5	Approximating Square Roots	8.NS.2
6	Compare Real Numbers	
7	Order Real Numbers	
8	Locate Real Numbers on the Real Number Line	
A2	Assessment – Real Numbers	
The Number System Performance Lesson – Rational and Irrational Numbers		

Lesson	Focus	Standard(s) References
1	Fraction/Decimal Conversion	<i>Prerequisite skills and scaffolded instruction to build readiness for grade level standards and instruction.</i>
2	Fraction/Decimal Conversion	
3	Compare & Order Fractions	
4	Compare & Order Fractions/Decimals	
5	Compare & Order Fractions/Decimals	
P1	Performance Task #1 – Writing Comparison Problems <b>(8.NS.1)</b>	
Post 1	Post-Assessment-Conversion & Comparison	8.NS.1



G8 The Number System  
Reteach Set 1 Teacher  
8.NS.1

**Standards:** 8.NS.1

VIEW

**Click this tile in the  
Standards Plus digital  
platform to access these  
projectable/printable lessons.**

**8<sup>th</sup> GRADE LANGUAGE ARTS -  
GRADE LEVEL SKILLS**  
Standards Plus<sup>®</sup> Year Long Materials  
Expressions & Equations



**SUPPORTING SKILLS THAT  
BUILD TO GRADE LEVEL**  
**Standards Plus<sup>®</sup> Intervention**  
Expressions & Equations

Lesson	Focus	Standard(s)
1	Square Numbers and Roots	8.EE.2
2	Using Square Roots	
3	Evaluate Cube Roots	
4	Using Cube Roots	
A1	Square and Cube Roots	
5	Properties of Exponents	8.EE.1
6	Properties of Exponents	
7	Properties of Exponents	
8	Properties of Exponents	
A2	Assessment – Properties of Exponents	
Expressions and Equations Performance Lesson 1 – Square Roots, Cube Roots, and Exponents		

Lesson	Focus	Standard(s) References
1	Exponents	<i>Prerequisite skills and scaffolded instruction to build readiness for grade level standards and instruction.</i>
2	Exponents	
3	Exponents	
4	Exponents	
5	Absolute Value	
6	Absolute Value	
7	Perfect Squares	
8	Perfect Squares	
9	Estimating Square Roots	
10	Estimating Square Roots	
P2	Performance Task #2 – Using Exponential Expressions ( <b>8.EE.1</b> )	
Post 2	Post-Assessment- Rational Numbers	8.EE.1, 8.EE.2, 8.EE.7, 8.NS.2



G8 Expressions and Equations Reteach Set 1  
Teacher 8.EE.1, 8.EE.2, 8.EE.7, 8.NS. ...

**Standards:** 8.NS.2, 8.EE.2, 8.EE.1, 8.EE.7

[VIEW](#)

Click this tile in the Standards Plus digital platform to access these projectable/printable lessons.

**8<sup>th</sup> GRADE LANGUAGE ARTS -  
GRADE LEVEL SKILLS**  
Standards Plus® Year Long Materials  
Expressions & Equations



**SUPPORTING SKILLS THAT  
BUILD TO GRADE LEVEL**  
**Standards Plus® Intervention**  
Expressions & Equations

Lesson	Focus	Standard(s)
<b>9</b>	Scientific Notation	8.EE.3, 8.EE.4
<b>10</b>	Scientific Notation	
<b>11</b>	Scientific Notation	
<b>12</b>	Scientific Notation	
<b>A3</b>	Assessment – Scientific Notation	
<b>13</b>	Operations Using Scientific Notation	8.EE.4
<b>14</b>	Operations Using Scientific Notation	
<b>15</b>	Operations Using Scientific Notation	
<b>16</b>	Using Technology w/ Scientific Notation	
<b>A4</b>	Assessment – Scientific Notation	
Expressions and Equations Performance Lesson 2 – Using Scientific Notation		

Lesson	Focus	Standard(s) References
1	Exponents	<i>Prerequisite skills and scaffolded instruction to build readiness for grade level standards and instruction.</i>
2	Exponents	
3	Exponents	
4	Exponents	
5	Absolute Value	
6	Absolute Value	
7	Perfect Squares	
8	Perfect Squares	
9	Estimating Square Roots	
10	Estimating Square Roots	
P2	Performance Task #2 – Using Exponential Expressions ( <b>8.EE.1</b> )	
Post 2	Post-Assessment- Rational Numbers	8.EE.1, 8.EE.2, 8.EE.7, 8.NS.2



G8 Expressions and Equations Reteach Set 1  
Teacher 8.EE.1, 8.EE.2, 8.EE.7, 8.NS. ...

**Standards:** 8.NS.2, 8.EE.2, 8.EE.1, 8.EE.7

**VIEW**

Click this tile in the Standards Plus digital platform to access these projectable/printable lessons.

**8<sup>th</sup> GRADE LANGUAGE ARTS -  
GRADE LEVEL SKILLS**  
Standards Plus<sup>®</sup> Year Long Materials  
Expressions & Equations



**SUPPORTING SKILLS THAT  
BUILD TO GRADE LEVEL**  
**Standards Plus<sup>®</sup> Intervention**  
Expressions & Equations

Lesson	Focus	Standard(s)
17	Graph Proportional Relationships & Determine Unit Rate	8.EE.5
18	Graph Proportional Relationships & Determine Unit Rate	
19	Comparing Proportional Relationships	
20	Comparing Proportional Relationships	
A5	Assessment – Graphing and Comparing Proportional Relationships	
21	Simple Triangles and Slope	8.EE.6
22	Simple Triangles and Slope	
23	Derive the Equation $y = mx$	
24	Derive the Equation $y = mx$	
A6	Assessment – Proportional Relationships, Lines, and Linear Equations	
Expressions and Equations Performance Lesson 3 – What is Slope?		

Lesson	Focus	Standard(s) References
11	Evaluating Variable Expressions	<i>Prerequisite skills and scaffolded instruction to build readiness for grade level standards and instruction.</i>
12	Writing Variable Expressions	
13	Order of Operations	
14	Using the Distributive Property	
15	Using the Distributive Property	
16	Solving Two-Step Equations	
17	Solving Two-Step Equations	
18	Writing Equations	
19	Writing Equations	
P3	Performance Task #3 – What’s Your Operation? <b>(8.EE.7, 8.EE.8)</b>	
Post 3	Post-Assessment-Expressions & Equations	8.EE.7, 8.EE.8



G8 Expressions and Equations Reteach Set 2  
Teacher 8.EE.7, 8.EE.8

**Standards:** 8.EE.7, 8.EE.8

VIEW

**Click this tile in the  
Standards Plus digital  
platform to access these  
projectable/printable lessons.**

**8<sup>th</sup> GRADE LANGUAGE ARTS -  
GRADE LEVEL SKILLS**  
**Standards Plus® Year Long Materials**  
Expressions & Equations



**SUPPORTING SKILLS THAT  
BUILD TO GRADE LEVEL**  
**Standards Plus® Intervention**  
Expressions & Equations

Lesson	Focus	Standard(s)
<b>25</b>	Types of Solutions to a Linear Equation	8.EE.7a
<b>26</b>	Linear Equations	
<b>27</b>	Solving 1-Step and 2-Step Equations	8.EE.7a, 8.EE.7b
<b>28</b>	Solving 1-Step and 2-Step Equations	
<b>A7</b>	Assessment – Finding Solutions to 1- and 2-Step Linear Equations	
<b>29</b>	Distributive Property	8.EE.7b
<b>30</b>	Simplifying Expressions	
<b>31</b>	Multi-Step Linear Equations	
<b>32</b>	Multi-Step Linear Equations	
<b>A8</b>	Solving Multi-Step Linear Equations	
<b>33</b>	Multi-Step Linear Equations	
<b>34</b>	Multi-Step Linear Equations	8.EE.7a
<b>35</b>	Multi-Step Linear Equations	8.EE.7b
<b>36</b>	Multi-Step Linear Equations	
<b>A9</b>	Solve Multi-Step Linear Equations	8.EE.7a, 8.EE.7b
<b>37</b>	Systems of Equations	8.EE.8a
<b>38</b>	Systems of Equations	
<b>39</b>	System of Equations	
<b>40</b>	Systems of Equations	
<b>A10</b>	Assessment – Systems of Equations	

Lesson	Focus	Standard(s) References
20	Solve Linear Equations	<i>Prerequisite skills and scaffolded instruction to build readiness for grade level standards and instruction.</i>
21	Solve Linear Equations	
22	Solve & Graph Linear Equations	
23	Solve & Graph Linear Equations	
24	Determining Slope	
25	Determining Slope	
26	Using Inverse Operations	
27	Using Inverse Operations	
P4	Performance Task #4 – What Is Slope? <b>(8.EE.5, 8.EE.7)</b>	
Post 4	Post-Assessment-Solve & Graph Equations	8.EE.5, 8.EE.6, 8.EE.7



G8 Expressions and Equations Reteach Set 3  
Teacher 8.EE.5, 8.EE.6, 8.EE.7 ...

**Standards:** 8.EE.5, 8.EE.6, 8.EE.7

VIEW

Click this tile in the  
**Standards Plus digital  
platform to access these  
projectable/printable lessons.**

**8<sup>th</sup> GRADE LANGUAGE ARTS -  
GRADE LEVEL SKILLS**  
Standards Plus<sup>®</sup> Year Long Materials  
Expressions & Equations



**SUPPORTING SKILLS THAT  
BUILD TO GRADE LEVEL**  
**Standards Plus<sup>®</sup> Intervention**  
Expressions & Equations

Lesson	Focus	Standard(s)
<b>41</b>	Systems of Equations	8.EE.8b
<b>42</b>	Systems of Equations	
<b>43</b>	Systems of Equations	
<b>44</b>	Systems of Equations	
<b>A11</b>	Assessment – Solving Systems of Equations Algebraically	
<b>45</b>	Systems of Equations	8.EE.8c
<b>46</b>	Systems of Equations	
<b>47</b>	Solving Systems of Equations	
<b>48</b>	Systems of Equations	
<b>A12</b>	Assessment – Systems of Equations	
Expressions and Equations Performance Lesson 4 – Systems of Equations		

Lesson	Focus	Standard(s) References
20	Solve Linear Equations	<i>Prerequisite skills and scaffolded instruction to build readiness for grade level standards and instruction.</i>
21	Solve Linear Equations	
22	Solve & Graph Linear Equations	
23	Solve & Graph Linear Equations	
24	Determining Slope	
25	Determining Slope	
26	Using Inverse Operations	
27	Using Inverse Operations	
P4	Performance Task #4 – What Is Slope? ( <b>8.EE.5, 8.EE.7</b> )	
Post 4	Post-Assessment-Solve & Graph Equations	



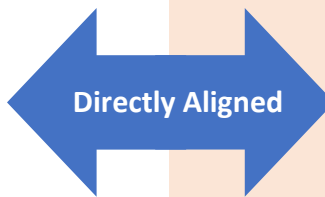
G8 Expressions and Equations Reteach Set 3  
Teacher 8.EE.5, 8.EE.6, 8.EE.7 ...

**Standards:** 8.EE.5, 8.EE.6, 8.EE.7

VIEW

**Click this tile in the  
Standards Plus digital  
platform to access these  
projectable/printable lessons.**

**8<sup>th</sup> GRADE LANGUAGE ARTS -  
GRADE LEVEL SKILLS**  
Standards Plus® Year Long Materials  
Functions



**SUPPORTING SKILLS THAT  
BUILD TO GRADE LEVEL**  
Standards Plus® Intervention  
Functions

Lesson	Focus	Standard(s)
1	Defining Functions	8.F.1
2	Defining Functions	
3	Defining Functions	
4	Defining Functions	
A1	Assessment – Defining Functions	
5	Identifying Linear and Non-Linear Functions	8.F.3
6	Identifying Linear and Non-Linear Functions	
7	Identifying Linear and Non-Linear Functions	
8	Linear Parent Function	8.F.3, 8.F.2
A2	Assessment – Comparing Functions	
9	Linear Functions in $y = k$ Form	8.F.2, 8.F.3
10	Rate of Change	8.F.4
11	Rate of Change	
12	Rate of Change	
A3	Assessment – Comparing Functions	8.F.3, 8.F.4
13	Rewrite Linear Equation into Slope-Intercept Form	8.F.2
14	Comparing Properties of Two Functions	
15	Comparing Properties of Two Functions	
16	Comparing Properties of Two Functions	
A4	Assessment – Comparing Functions	
Functions Performance Lesson 1 – Linear Functions and Relationships		

Lesson	Focus	Standard(s) References
1	Ratio	<i>Prerequisite skills and scaffolded instruction to build readiness for grade level standards and instruction.</i>
2	Unit Rate	
3	Rate	
4	Rate, Ratio, Unit Rate	
5	Solving Rate Problems	
6	Solving Average Speed Problems	
7	Solving Rate & Average Speed Problems	
P5	Performance Task #5 – Solving Rate Problems ( <b>8.F.2, 8.F.4, 8.F.5</b> )	
Post 5	Post-Assessment-Rate, Ratio, Unit Rate	8.F.2, 8.F.4, 8.F.5



G8 Functions Reteach Set  
1 Teacher 8.F.2, 8.F.4, 8.F.5

**Standards:** 8.F.2, 8.F.4,  
8.F.5

VIEW

Click this tile in the  
Standards Plus digital  
platform to access these  
projectable/printable lessons.



**8<sup>th</sup> GRADE LANGUAGE ARTS -  
GRADE LEVEL SKILLS**  
Standards Plus<sup>®</sup> Year Long Materials  
Functions



**SUPPORTING SKILLS THAT  
BUILD TO GRADE LEVEL**  
Standards Plus<sup>®</sup> Intervention  
Functions

Lesson	Focus	Standard(s)
17	Comparing the Properties of Two Functions	8.F.2
18	Construct/Interpret a Function to Model a Linear Relationship	8.F.4
19	Construct/Interpret a Function to Model a Linear Relationship	
20	Construct/Interpret a Function to Solve Problems	
A5	Assessment – Constructing and Interpreting Functions	8.F.2, 8.F.4
21	Sketch a Function Graph	8.F.5
22	Describe Functional Relationships	
23	Describe Functional Relationships	8.F.5
24	Describe Functional Relationships	
A6	Assessment – Use Functions to Model Relationships	
<b>Functions Performance Lesson 2 – Functional Relationships</b>		

Lesson	Focus	Standard(s) References
8	x- and y- Intercepts	<i>Prerequisite skills and scaffolded instruction to build readiness for grade level standards and instruction.</i>
9	x- and y- Intercepts	
10	x- and y- Intercepts from a Linear Equation	
11	x- and y- Intercepts from a Linear Equation	
12	Graphing Linear Equations	
13	Graphing Linear Equations	
14	Identifying Functions	
P6	<b>Performance Task #6 – Functions &amp; Their Graphs (8.F.1- 8.F.5)</b>	
Post 6	Post-Assessment- Relationships	8.F.1, 8.F.2, 8.F.3, 8.F.4, 8.F.5



G8 Functions Reteach Set  
2 Teacher 8.F.1, 8.F.2,  
8.F.3, 8.F.4, 8.F.5 ...

**Standards:** 8.F.1, 8.F.3,  
8.F.2, 8.F.4, 8.F.5

**VIEW**

Click this tile in the  
Standards Plus digital  
platform to access these  
projectable/printable lessons.

**8<sup>th</sup> GRADE LANGUAGE ARTS -  
GRADE LEVEL SKILLS**  
Standards Plus<sup>®</sup> Year Long Materials  
Statistics & Probability



**SUPPORTING SKILLS THAT  
BUILD TO GRADE LEVEL**  
**Standards Plus<sup>®</sup> Intervention**  
Statistics & Probability

Lesson	Focus	Standard(s)
<b>1</b>	Associations of Bivariate Data	8.SP.1
<b>2</b>	Construct Scatter Plots	
<b>3</b>	Create and Interpret Scatter Plots	8.SP.1, 8.SP.2
<b>4</b>	Line of Best Fit	
<b>A1</b>	Assessment – Scatter Plots and Line of Best Fit	
<b>5</b>	Evaluate and Write Linear Models	8.SP.2, 8.SP.3
<b>6</b>	Find and Use Linear Models to Solve Problems	8.SP.3
<b>7</b>	Evaluate Goodness of Fit	
<b>8</b>	Find and Use a Linear Model to Solve Problems	
<b>A2</b>	Assessment – Linear Models of Scatter Plots	8.SP.2, 8.SP.3
Statistics and Probability Performance Lesson 1 – Scatter Plots		

Lesson	Focus	Standard(s) References
1	Probability	<i>Prerequisite skills and scaffolded instruction to build readiness for grade level standards and instruction.</i>
2	Probability	
3	Samples of Populations	
4	Samples of Populations	
5	Predict Outcomes for a Simple Event	
6	Independent and Dependent Events	
7	Probability and Proportions	
8	Probability of Compound Events	
9	Probability of Dependent Events	
10	Probability of Compound/Dependent Events	
P7	Performance Task #7 – Defining Samplings ( <b>8.SP.4</b> )	
Post 7	Post-Assessment-Exploring Probability	8.SP.4



G8 Statistics and Probability Reteach Set 1  
Teacher 8.SP.4

Standards: 8.SP.4

VIEW

Click this tile in the Standards Plus digital platform to access these projectable/printable lessons.

**8<sup>th</sup> GRADE LANGUAGE ARTS -  
GRADE LEVEL SKILLS**  
Standards Plus<sup>®</sup> Year Long Materials  
Statistics & Probability



**SUPPORTING SKILLS THAT  
BUILD TO GRADE LEVEL**  
**Standards Plus<sup>®</sup> Intervention**  
Statistics & Probability

Lesson	Focus	Standard(s)
<b>9</b>	Construct Two-Way Frequency Tables	8.SP.4
<b>10</b>	Construct Two-Way Frequency Tables	
<b>11</b>	Construct Two-Way Relative Frequency Tables	
<b>12</b>	Two-Way Relative Frequency Tables	
<b>A3</b>	Assessment – Scatter Plots and Two-Way Tables	
Statistics and Probability Performance Lesson 2 – Two-Way Tables		

Lesson	Focus	Standard(s) References
11	Determining Mean	<i>Prerequisite skills and scaffolded instruction to build readiness for grade level standards and instruction.</i>
12	Determining Median	
13	Determining Mode	
14	Mean, Median, Mode, Range, & Outliers	
15	Mean, Median, Mode, Range, & Outliers	
16	Tree Diagrams	
17	Stem-anLeaf Plots	
18	Quartiles	
19	Quartiles	
20	Box-anWhiskers Plots	
P8	Performance Task #8 – Garden Design ( <b>8.SP.1, 8.SP.2</b> )	
Post 8	Post-Assessment-Interpret & Display Data	8.SP.1, 8.SP.2



G8 Statistics and Probability Reteach Set 2  
Teacher 8.SP.1, 8.SP.2 ...

**Standards:** 8.SP.1, 8.SP.2

VIEW

**Click this tile in the  
Standards Plus digital  
platform to access these  
projectable/printable lessons.**

**8<sup>th</sup> GRADE LANGUAGE ARTS -  
GRADE LEVEL SKILLS**  
Standards Plus<sup>®</sup> Year Long Materials  
Geometry



**SUPPORTING SKILLS THAT  
BUILD TO GRADE LEVEL**  
Standards Plus<sup>®</sup> Intervention  
Geometry

Lesson	Focus	Standard(s)
1	Verifying Properties	8.G.1
2	Showing Congruency	8.G.2
3	Mapping Figures	
4	Mapping Figures	
A1	Assessment – Using Rotations, Reflections, and Translations	8.G.1, 8.G.2
5	Dilating Figures	8.G.3, 8.G.4
6	Transforming Figures	
7	Transforming Figures	
8	Transforming Figures	
A2	Transforming Figures	
9	Describe a Sequence of Transformations	8.G.4
10	Angle Sum and Exterior Angle Theorems	8.G.5
11	Applying the Angle Sum of a Triangle	
12	Apply the Angle Sum and Exterior Angle of Triangles	
A3	Assessment – The Angle Sum and Exterior Angle of Triangles	8.G.4, 8.G.5
13	Defining Angles Made by a Transversal	8.G.5
14	Measuring the Angles Formed by a Transversal	
15	Measuring Angles Formed by a Transversal	
16	Measuring Angles Formed by a Transversal	
A4	Assessment – Parallel Lines Cut by a Transversal	

Lesson	Focus	Standard(s) References
1	Circles	<i>Prerequisite skills and scaffolded instruction to build readiness for grade level standards and instruction.</i>
2	Circles	
3	Congruency	
4	Congruency	
5	Congruency	
6	Congruency	
P9	Performance Task #9 – How Do You Make It Congruent? ( <b>8.G.2, 8.G.4</b> )	
Post 9	Post-Assessment-Circles & Congruency	8.G.2, 8.G.4



G8 Geometry Reteach Set  
1 Teacher 8.G.2, 8.G.4

**Standards:** 8.G.2, 8.G.4

VIEW

Click this tile in the  
Standards Plus digital  
platform to access these  
projectable/printable lessons.

**8<sup>th</sup> GRADE LANGUAGE ARTS -  
GRADE LEVEL SKILLS**  
Standards Plus<sup>®</sup> Year Long Materials  
Geometry



**SUPPORTING SKILLS THAT  
BUILD TO GRADE LEVEL**  
Standards Plus<sup>®</sup> Intervention  
Geometry

Lesson	Focus	Standard(s)
17	Parallel Lines Cut by a Transversal	8.G.5
18	Use Transversals to Find the Angle Sum of a Triangle	
19	Properties and Criteria for Similar Triangles	
20	Criteria for Similar Triangles	
A5	Assessment – Transformations, Triangles, and Parallel Lines Cut by Transversals	
Geometry Performance Lesson 1 – 2-D Figures & Transformations		

Lesson	Focus	Standard(s) References
1	Circles	<i>Prerequisite skills and scaffolded instruction to build readiness for grade level standards and instruction.</i>
2	Circles	
3	Congruency	
4	Congruency	
5	Congruency	
6	Congruency	
P9	Performance Task #9 – How Do You Make It Congruent? <b>(8.G.2, 8.G.4)</b>	
Post 9	Post-Assessment-Circles & Congruency	8.G.2, 8.G.4



G8 Geometry Reteach Set  
1 Teacher 8.G.2, 8.G.4

**Standards:** 8.G.2, 8.G.4

VIEW

Click this tile in the Standards Plus digital platform to access these projectable/printable lessons.

**8<sup>th</sup> GRADE LANGUAGE ARTS -  
GRADE LEVEL SKILLS**  
Standards Plus® Year Long Materials  
Geometry



**SUPPORTING SKILLS THAT  
BUILD TO GRADE LEVEL**  
Standards Plus® Intervention  
Geometry

Lesson	Focus	Standard(s)
<b>21</b>	Proof of the Pythagorean Theorem	8.G.6
<b>22</b>	Proof of the Pythagorean Theorem	
<b>23</b>	Proof of the Pythagorean Theorem	
<b>24</b>	Converse of the Pythagorean Theorem	
<b>A6</b>	Assessment – Proofs of the Pythagorean Theorem and Its Converse	
<b>25</b>	Applying the Pythagorean Theorem	
<b>26</b>	Applying the Pythagorean Theorem	
<b>27</b>	Applying the Pythagorean Theorem	
<b>28</b>	Applying the Pythagorean Theorem	
<b>A7</b>	Assessment – Apply the Pythagorean Theorem	
<b>29</b>	Applying the Pythagorean Theorem and Its Converse	8.G.7
<b>30</b>	Applying the Pythagorean Theorem	
<b>31</b>	Pythagorean Theorem and Special Right Triangles	
<b>32</b>	Applying the Pythagorean Theorem to 3-Dimensional Problems	
<b>A8</b>	Assessment – Applying the Pythagorean Theorem	
<b>33</b>	Finding the Distance Between Points on a Coordinate Plane	
<b>34</b>	Distance Formula	
<b>35</b>	Applying the Distance Formula	
<b>36</b>	Distance Formula and the Converse of the Pythagorean Theorem	
<b>A9</b>	Assessment – Pythagorean Theorem	
<b>Geometry Performance Lesson 2 – Pythagorean Theorem</b>		

Lesson	Focus	Standard(s) References	
7	Graphing in the Coordinate Plane	<i>Prerequisite skills and scaffolded instruction to build readiness for grade level standards and instruction.</i>	
8	Graphing in the Coordinate Plane		
9	Graphing in the Coordinate Plane		
10	Graphing in the Coordinate Plane		
11	Classifying Angles		
12	Classifying Angles		
13	Classifying Angles		
14	Classifying Triangles		
15	Classifying Triangles		
16	Determine Unknown Angle Measures		
17	Determine Unknown Angle Measures		
P10	Performance Task #10 – Angles, Angles, Angles! <b>(8.G.5)</b>		
Post 10	Post-Assessment-Graphing/Angles/Triangles		8.G.1, 8.G.2, 8.G.5



G8 Geometry Reteach Set  
2 Teacher 8.G.1, 8.G.2,  
8.G.5

**Standards:** 8.G.2, 8.G.5,  
8.G.1

VIEW

**Click this tile in the  
Standards Plus digital  
platform to access these  
projectable/printable lessons.**

**8<sup>th</sup> GRADE LANGUAGE ARTS -  
GRADE LEVEL SKILLS**  
Standards Plus<sup>®</sup> Year Long Materials  
Geometry



**SUPPORTING SKILLS THAT  
BUILD TO GRADE LEVEL**  
Standards Plus<sup>®</sup> Intervention  
Geometry

Lesson	Focus	Standard(s)
<b>37</b>	Use the Volume Formula of Cylinders to Solve Problems	8.G.9
<b>38</b>	Use the Volume Formula of Cylinders to Solve Problems	
<b>39</b>	Use the Volume Formula of Cylinders to Solve Problems	
<b>40</b>	Use the Volume Formula of Cylinders to Solve Problems	
<b>A10</b>	Assessment – Volume of Cylinders and Cones	
<b>41</b>	Use the Volume Formula of Spheres to Solve Problems	8.G.9
<b>42</b>	Use the Volume Formula of Spheres and Cylinders to Solve Problems	
<b>43</b>	Use the Volume Formula of Three-Dimensional Shapes to Solve Problems	
<b>44</b>	Use the Volume Formula of Three-Dimensional Shapes to Solve Problems	
<b>A11</b>	Assessment 11 – Use the Volume Formula	
Geometry Performance Lesson 3 – Volume		

Lesson	Focus	Standard(s) References
18	Pythagorean Theorem	<i>Prerequisite skills and scaffolded instruction to build readiness for grade level standards and instruction.</i>
19	Pythagorean Theorem	
20	Pythagorean Theorem	
21	Pythagorean Theorem	
22	Pythagorean Theorem	
23	Pythagorean Theorem	
P11	Performance Task #12 – Why Is It Wrong? ( <b>8.G.6, 8.G.7</b> )	
Post 11	Post-Assessment-Pythagorean Theorem	8.G.6, 8.G.7



**G8 Geometry Reteach Set  
3 Teacher 8.G.6, 8.G.7**

**Standards: 8.G.6, 8.G.7**

**VIEW**

Click this tile in the  
Standards Plus digital  
platform to access these  
projectable/printable lessons.