

STANDARDS PLUS INTERVENTION ADMINISTRATOR TRAINING GUIDE

ON DEMAND VIDEO TRAINING

DOWNLOAD or **PRINT** this guide to assist you while training.

DISTRIBUTE the Teacher Training Guide to your staff.

Teachers should bring their **Teacher's Editions** to use as a reference throughout the training.



JUST PRESS **PLAY**
TO TRAIN YOUR STAFF!

**THE TRAINING IS APPROXIMATELY
30-40 MINUTES AND BE CAN PRESENTED:**

At a staff meeting - On a professional development day
Other available times

FIND THE TRAININGS AT
WWW.STANDARDSPLUS.ORG/TRAINING

ADMINISTRATOR'S TRAINING OUTLINE

0:00 - 2:28
(2:38)

INTRODUCTION

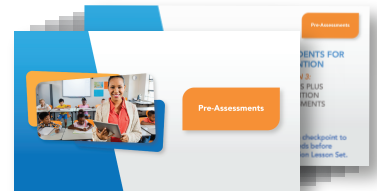
Introduces:
Training Goals
Supporting Research
Included Materials



2:39 - 3:34
(0:55)

PRE-ASSESSMENT

Identifies Students:
Teacher Observation
Adopted curriculum assessments
Included Pre-Assessments



3:35 - 7:57
(4:22)

PROGRAM ORGANIZATION

Describes program organization:
Using the Index
Scaffolded Instruction
Academic Vocabulary



7:58 - 13:09
(5:11)

TEACHING A LESSON

Presents:
Teacher Options
Teacher Page
Student Page
Projecting Student page



13:10 - 14:47
(1:37)

PERFORMANCE LESSONS

Explains Performance Lessons:
Apply learned skills
Formatively assess learning



14:48 - 17:14
(2:26)

POST-ASSESSMENT

Determines progress:
Learning Checkpoint
After teaching a lesson set
Scoring Options



17:15 - 19:19
(2:04)

LANGUAGE DEVELOPMENT

Summarizes embedded language development strategies:
Strategies embedded in the lessons
Access to additional language development resources



19:20 - 21:19
(1:59)

CONCLUSION

Summarizes Training:
Review training goals



NOTES

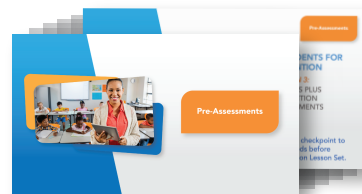
STARTS AT
0:00

INTRODUCTION



2:39

PRE-ASSESSMENT



3:35

PROGRAM ORGANIZATION



7:58

TEACHING A LESSON



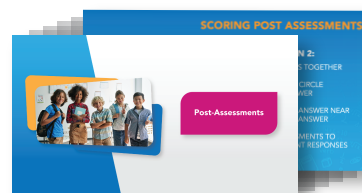
13:10

PERFORMANCE LESSONS



14:48

POST-ASSESSMENT



17:15

LANGUAGE DEVELOPMENT



19:20

CONCLUSION

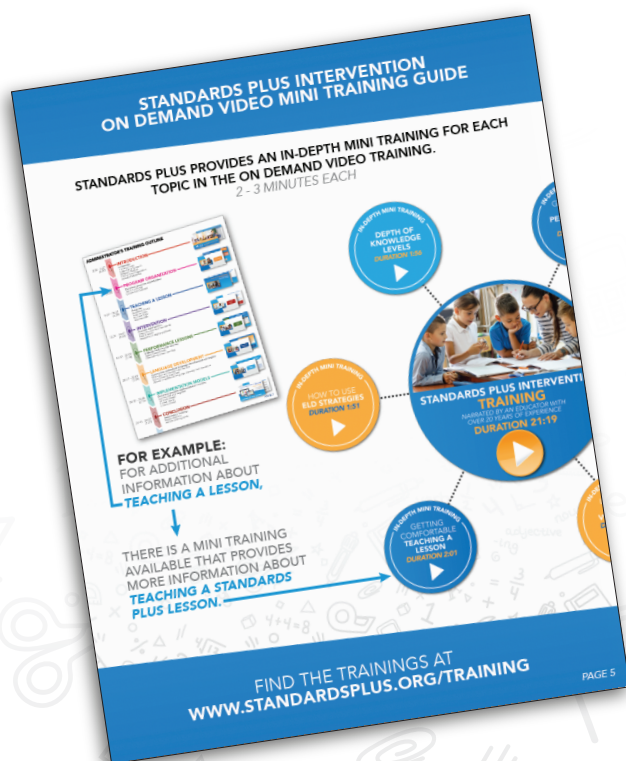


FOLLOW UP DISCUSSION

SAMPLE FOLLOW UP DISCUSSION TOPICS:

- ♦ *Are there questions regarding the implementation of the program now that you've seen the training?*
- ♦ *What other information do you need to begin implementation?*

Provide the teachers with a copy of the **ON DEMAND VIDEO MINI TRAINING GUIDE (page 5)** and explain that these 2-3 minute videos give more details for each topic in the training. They can access them at any time.

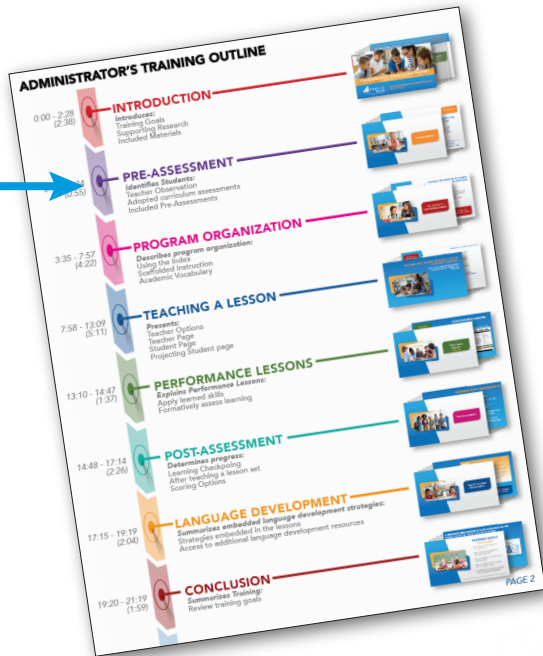


ANY QUESTIONS FOR STANDARDS PLUS CAN BE SENT VIA THE CONTACT FORM ON THE TRAINING PAGE:
WWW.STANDARDSPLUS.ORG/TRAINING

MINI TRAININGS

STANDARDS PLUS PROVIDES AN IN-DEPTH MINI TRAINING FOR EACH TOPIC IN THE ON DEMAND VIDEO TRAINING.

2 - 3 MINUTES EACH



Time	Topic	Duration
0:00 - 2:28	INTRODUCTION	(2:28)
2:28 - 3:35	PRE-ASSESSMENT	(1:07)
3:35 - 7:57	PROGRAM ORGANIZATION	(4:22)
7:58 - 13:09	TEACHING A LESSON	(5:11)
13:10 - 14:47	PERFORMANCE LESSONS	(1:37)
14:48 - 17:14	POST-ASSESSMENT	(2:26)
17:15 - 19:19	LANGUAGE DEVELOPMENT	(2:04)
19:20 - 21:19	CONCLUSION	(1:59)

FOR EXAMPLE:
FOR ADDITIONAL
INFORMATION ABOUT
TEACHING A LESSON,

THERE IS A MINI TRAINING
AVAILABLE THAT PROVIDES
MORE INFORMATION ABOUT
**TEACHING A STANDARDS
PLUS LESSON.**

IN-DEPTH MINI TRAINING

DEPTH OF KNOWLEDGE LEVELS

DURATION 1:56



IN-DEPTH MINI TRAINING

HOW TO USE ELD STRATEGIES

DURATION 1:51



STANDARDS PLUS INTERVENTION TRAINING

NARRATED BY AN EDUCATOR WITH OVER 20 YEARS OF EXPERIENCE

DURATION 21:19



IN-DEPTH MINI TRAINING

GETTING COMFORTABLE TEACHING A LESSON

DURATION 2:01



FIND THE TRAININGS AT
WWW.STANDARDSPLUS.ORG/TRAINING